

Industrial peat extraction

Attracting investments in the peat extraction and
sale project

LLC "GELATERIA DISTRIBUTION"
Makariv, Buchansky district, Kyiv region
gelateriadistribution@gmail.com



Project Description

The investment project aims to optimize peat extraction and supply the market with a high-quality, valuable, and environmentally friendly product. The goal is to ensure the profitability of the business, which has significant potential in this sector.

As of today, LLC "GELATERIA DISTRIBUTION" possesses all the necessary permits and documents that authorize the conduct of mining activities.

Project objective

Launch a stable process of peat extraction and supply to meet the needs of both domestic and international markets with maximum benefit for all parties, including investors, consumers, and the environment.





INVESTMENT

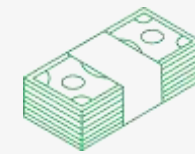
in the project "Industrial peat extraction"



Investment needed: \$1.1 million



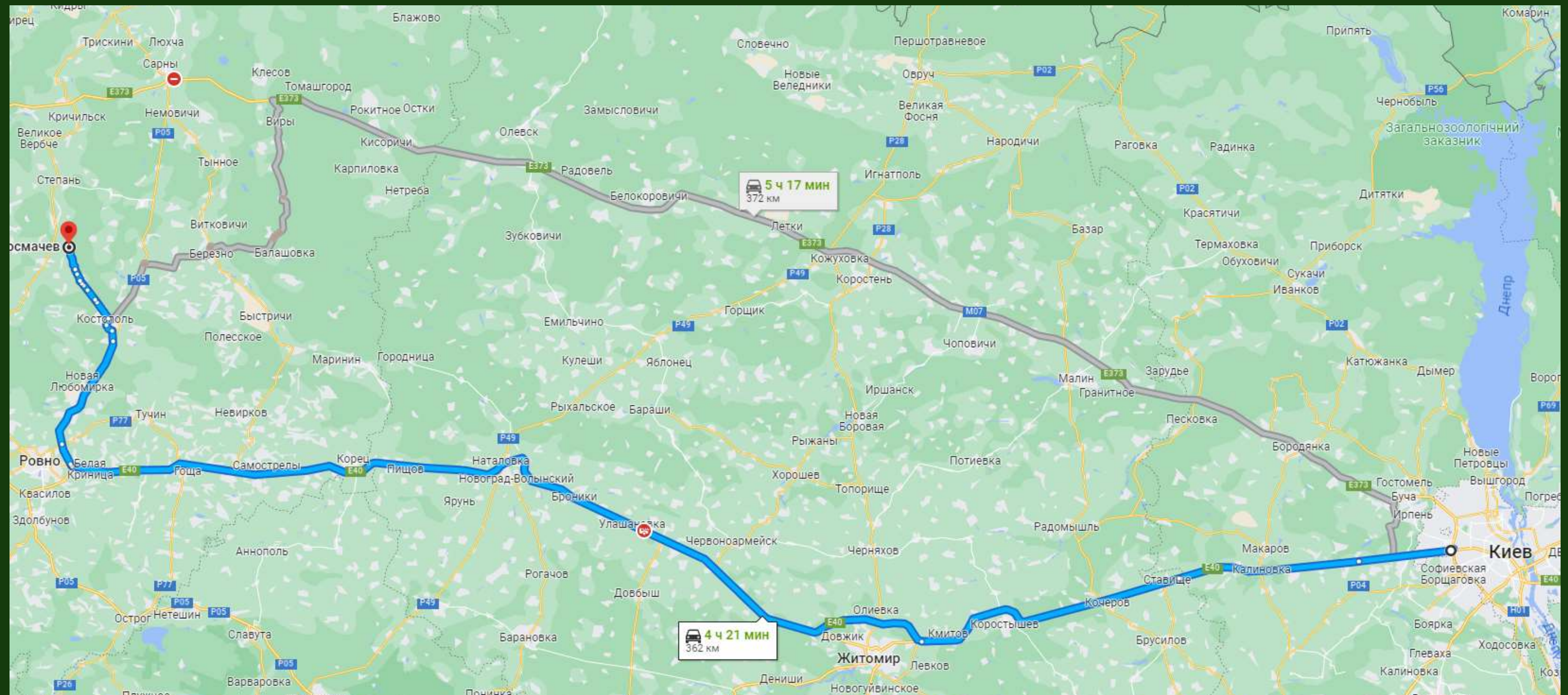
Payback period: 2-3 years

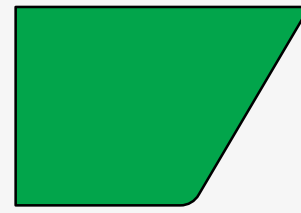


EBITDA indicator: \$900 thousand per year

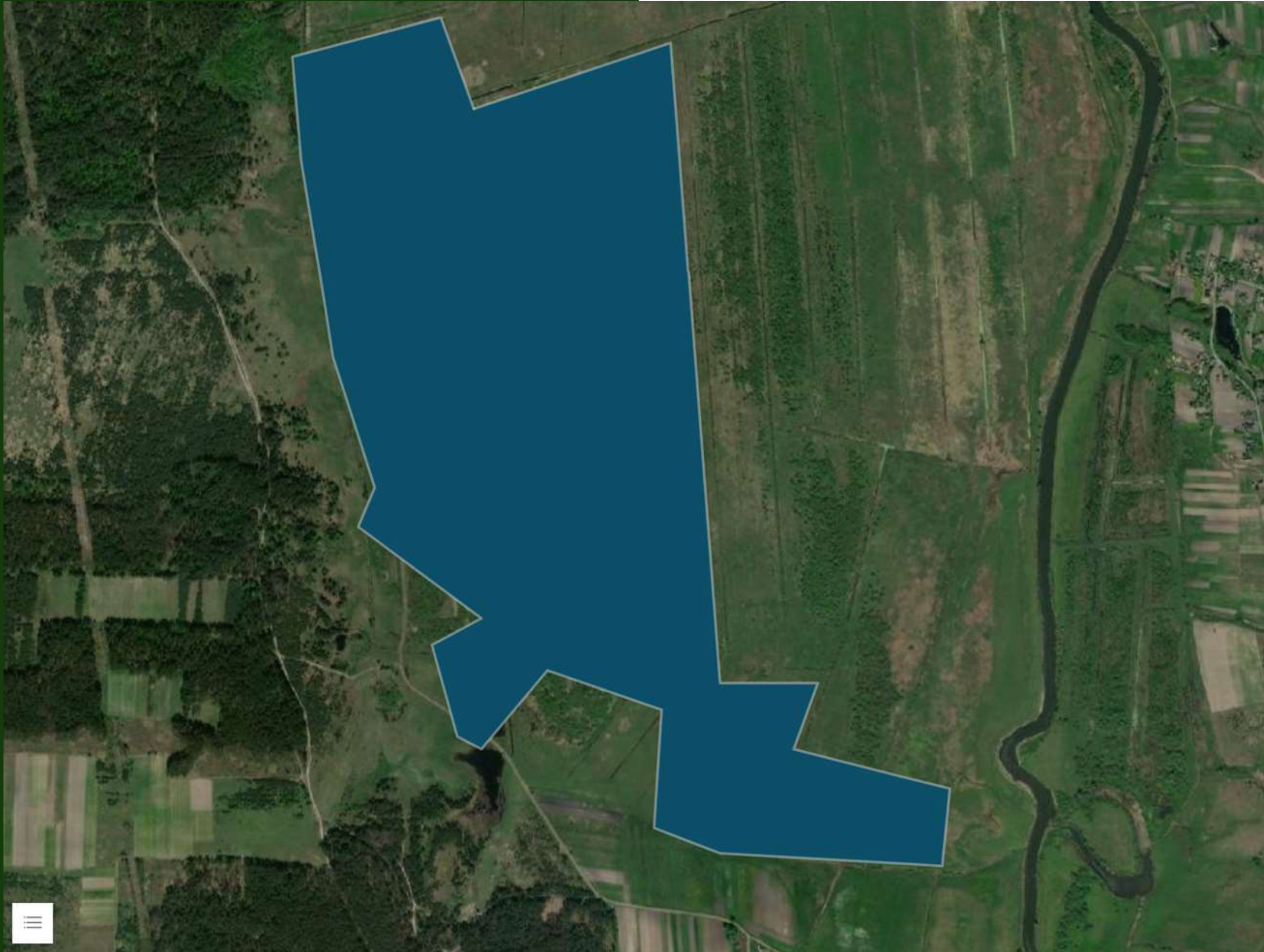
Location and Placement

The "Zakrynytsya-1" site, the "Zakrynytsya" peat deposits with an area of 143.5 hectares, are located 1.1 km west of the village of Kosmachiv, Rivne district, Rivne region. The closest settlements to the deposit are the villages of Kosmachiv, Zbuzh, and Trostyanets. The "Mokvin" railway station of the Lviv Railway is located 13 km to the northeast.





PEAT DEPOSIT "ZAKRYNYTSYA-1"



Area: 143.5
hectares



Total reserves of the deposit:
1,077 thousand tons



Estimated extraction volume:
40,000 tons per year



WHAT IS IT PEAT?

Peat is an organic substance formed through the decomposition and accumulation of plant material in conditions of humidity, nutrient deficiency, and low oxygen levels. It is a crucial natural resource and finds applications in various fields, including agriculture, energy, and ecological construction. The process of peat formation can span thousands of years.

Fields of application



- **Agriculture.** Peat is widely used in agriculture as a fertilizer to nourish plants, improve soil, and enhance fertility.
- **Gardening.** Soil mixtures for gardening and landscape design are made from peat.
- **Mushroom cultivation.** It can also be used for growing mushrooms, such as champignons.
- **Energy.** Peat briquettes or pellets are used for heating and heat supply, as well as for the production of electricity at peat power plants.

Depending on the quality and type of peat, it can be used in many areas.



LLC "GELATERIA DISTRIBUTION" offers a unique opportunity for investment in a stable and promising industry with high profit potential. We consider peat as a crucial component for addressing various global challenges, including agriculture, biofuel production, environmental protection, and many other sectors.

Market and Demand

The demand for peat exists both in the domestic market of Ukraine and internationally. Currently, it is known that 81% of the total peat production is used to meet the needs of Ukrainian consumption, and 19% is exported to European countries. It is a valuable resource for many countries in the energy industry and agriculture.





Our investment project is not just an opportunity for financial growth, but also a contribution to a sustainable future.

Thank you for your attention and willingness to cooperate.